

WALLS - CLEARSPAN™

H60

As a fully mechanically fixed structure CLEARSPAN® is a unique Lightweight Blast & Fire Wall System.

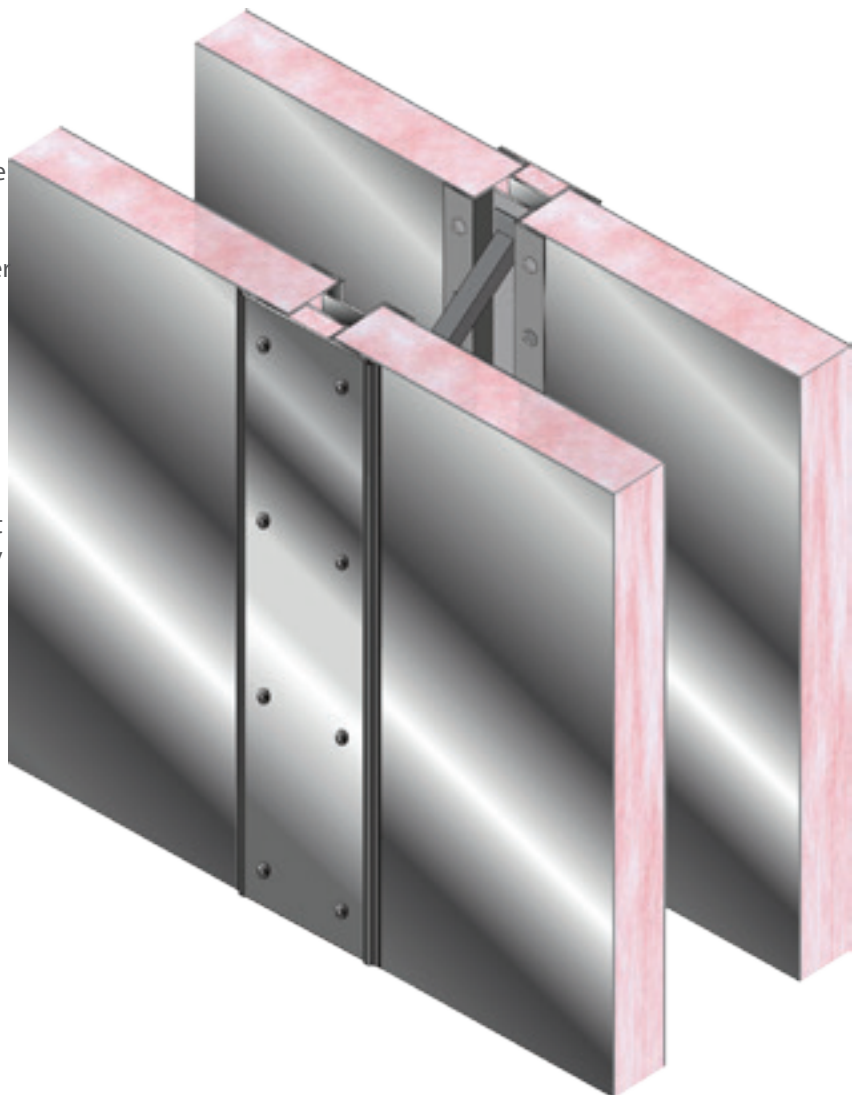
Manufactured from 2 x 50mm thick composite panels.

The unique design enables the inner and outer panels to be held in place with a structural panel joint.

The cavity structure is so designed that in the event of an explosion, the steel supports between the joint system will collapse in a controlled manner reducing the energy imported to the supporting structure whilst at the same time maintaining structural integrity in the face of a Hydrocarbon fire.

Details

- Fully mechanically fixed
- Lightweight
- Significant Blast Loadings can be achieved without the need for additional support structures.
- Cavity depth and panel thickness can be adjusted to meet elevated Blast requirements.
- Designed to incorporate BD Blast doors, windows and penetrations.



Description	CLSP - H60
Fire class	H60 / 2 hour
Standard width	1.2 mtrs
Panel height	up to 12 mtrs
Thickness	300 mm (overall)
Weight	90 kg/m ² (average)
Sound reduction	R _w =54 dB
Thermal isolation	U=0.22 W/m ² K
Blast design subject to project requirements	Illustrated design rated to 1.35 Bar and 4.35 mtr Span and 250 mm Cavity